



3BROTHERS
BIG, BRILLIANT, BRIGHT



COMPANY PROFILE



3BROTHERS
BIG, BRILLIANT, BRIGHT

COMPANY PROFILE

ABOUT COMPANY

3BROTHERS is one of the leading lighting manufacturers all over Egypt, the MENA region, and African countries and for 30 years we've been a leader in the Egyptian market with two huge factories in the 10th of Ramadan industrial area.

With our unique Die cast abilities and high-quality laboratories' that provide an integrated system with the latest technologies to achieve the highest quality combination with various integrating tests in the field of lighting.

3Brothers offers its partners and clients more than just a lighting fixture, we offer you a design tool with an architectural look all without any compromise in the lifetime and quality.

VISION

3Brothers company seeks to deepen the awareness of lighting and its practical applications in the form of leading products.

It aims to make change in the concept of community about lighting. 3Brothers reflects the latest discoveries of this science and its applications.

MISSION

3Brothers is an industrial and trading company which seeks to deliver and provide integrated solutions in the field of lighting with its products and applications.

It exerts plenty of efforts to develop the products and applications for our lighting consultants' usage and the final consumer in Egypt and the Arab region.

VALUES

- We are client focused.
- We consider the customer's opinions in product development and make products in strict accordance with customer requirements.
- We motivate our staff.
- We constantly provide the best working conditions possible, educate and train our people and provide a motivating work environment.
- We challenge our partners.
- We are strict about meeting contractual obligations, value long-term, loyal relationships and give priority to environmentally friendly technologies.
- We value the environment.
- We gather, sort, and handle all production waste according to strict requirements.

The company aims at making available a distinctive product in the local and exterior markets. So, the company attained several certificates that guarantee the quality of processes and products for maximum customer satisfaction

PRODUCT LINES:

3Brothers advanced lighting system brings out the best in your environment and is the ideal lighting solution if you are looking to enhance the ambience and atmosphere in any room or space. With the freedom to create the perfect lighting scenes for home, business or outdoor environments, 3Brothers is the obvious choice for those who value quality and confidence of operation.

Lighting Solutions:

Indoor range: LED and conventional Down Lights, Task lighting, LED panels, Fluorescent fixtures, Industrial Lighting, Emergency lights

Outdoor range: Steplights, Uplights, Floodlights, Spikes, Wall washers, Wall mounted luminaires, Bollards, Poles, Urban luminaires

We are enthusiastic in dealing with the best OEM, providing us with the highest quality aiming to achieve the customers' satisfaction.

Power Solutions:

Lighting automation system: KNX, CBS, BMS, Casambi

Electrical panels: Type tested, non-type tested, partial type tested

Services:

3Brothers offers several trainings and seminars to provide the clients with profound product knowledge, detailing specifications and applications of various products covering internal, external lighting and LED products.

3Brothers also offers their esteemed clients with free of charge service of designing and planning projects using one of the best lighting design and simulation programs, Relux.

Our services include training courses about:

- 1-Lighting design program (RELUX)
- 2-Landscape lighting
- 3-Light sources
- 4-Light physics.

3Brothers also offer the lighting design for free to support 3Brothers customers.

Offices & Showrooms

EN Our team is at your side to help with your project anywhere in the world. we are there for you from the planning stage through to project completion. Visit <https://www.3-brothers.com> to find your 3Brothers lighting expert - it's quick and easy.

| Offices & Agents

- Egypt
- Kuwait
- KSA
- Ghana
- Germany
- Jordon
- Congo
- Zambia

| Europe

- Germany

| Africa

- Libya
- Sudan
- Somalia
- Ghana
- Kenya

| Middle East

- Kuwait
- Jordon
- Saudi Arabia
- UAE
- Bahrain
- Iraq
- Syria
- Yemen



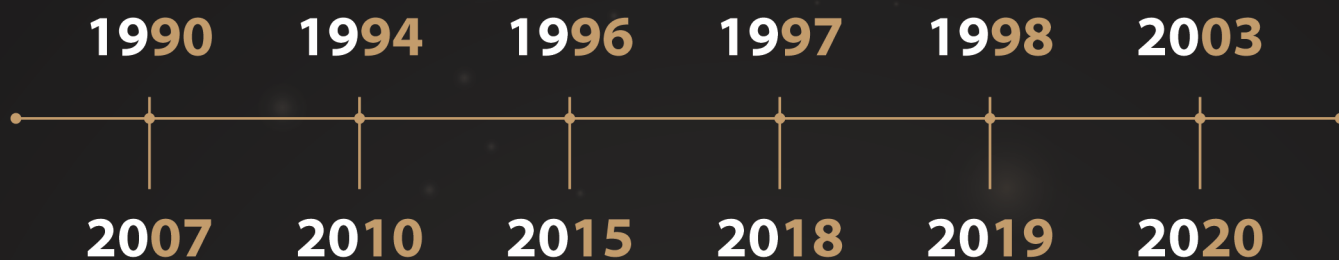
30 Years of Brightness



EN It all began with a dream....

Since its inauguration in 1990, 3Brothers has been at the forefront of industry pioneering; being a regional leader in the interior and exterior lighting systems producing around 6000 products and covering different applications.

With a **30 year** heritage of designing, manufacturing and distributing leading edge lighting system products in the MENA 3Brothers has developed a highly regarded reputation for innovation.



1990: **The Beginning** The 3Brothers founders were established 1st Factory.

1994: **Roxy Showroom** Inaugurating our 1st showroom in Egypt.

1996: **Labs** Got the 1st Goniophotometer in the MENA region.

1997: **ERP 1st version** Using the latest software technologies.

1998: **ISO 9001 & ISO 14000 / 18000** certifications.

2003: **Alex showroom** Egypt's second most important city was our next step.

2007: **Introducing LED** Was the 1st Lighting manufacturer in the MENA region.

2010: **2nd factory** Expanding our business through a mega facility with 48,000 m²

2015: **Panels** Having a gigantic partner as Schneider Electric.

2018: **Academy** To train, spread the lighting Knowledge and awareness.

2019: **Germany office** Taking our 1st step towards globalization.

2020: **Innovation center "upcoming"** developing our 1st factory to become the 1st lighting innovation center.



QUALITY POLICY

Customer satisfaction is one of the most important aspects of the activity of 3Brothers.

Quality Control includes:

- Policy, planning, and administration. Product design and design change control. Control of purchased material.
- Production quality control.
- User contact and field performance. Corrective action.
- Employee selection, training and motivation.

LABS

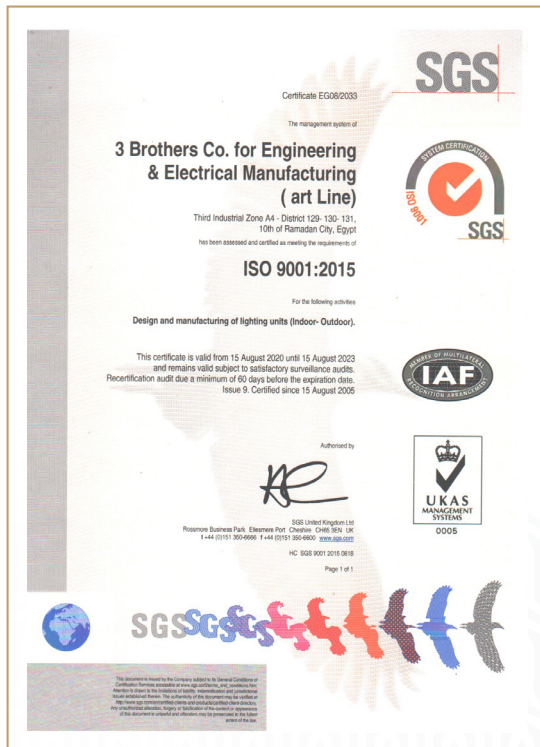
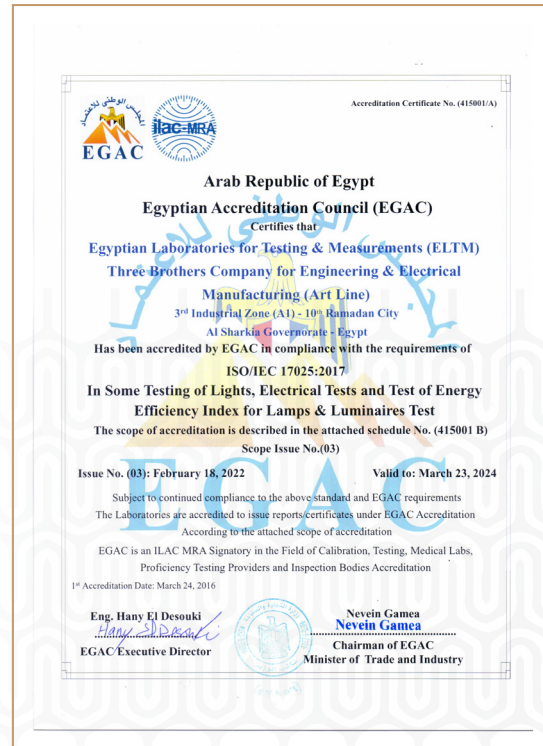
3Brothers laboratories are considered as one of the most advanced labs in Egypt and the MENA region as it provides an integrated system with the latest technologies to achieve the highest quality combination with various integrating tests in the field of lighting according to the laboratories of the international standard ISO-17025 for the year 2017 and this ensures efficiency and safety in the use of products in the long term.

Research and Development

3BROTHERS Research and Development department plays an important role in the life cycle of our luminaires. We invest in the research and development of new products to guarantee the long-term growth of the company.




OUR CERTIFICATES




OUR CERTIFICATES



OUR CERTIFICATES



DIN EN ISO 9001:2008
Zurückbau 01 610 026214



قطاع معامل مركز أبحاث الجهد الفائق
الكيلو ٢٧ طريق القاهرة الإسكندرية الصحراوى
رقم التقرير : (٢٠١٧/ ١٠٥)
صفحة ١ من ٣

تقرير اختبار

رقم التقرير : (٢٠١٧/ ١٠٥)

العميل : شركة ثري برازرز للصناعات الهندسية والكهربائية.

تاريخ التقرير : ٢٠١٧ / ٣ / ٢٩ .

مكان الاختبار :
- مركز أبحاث الجهد الفائق .
- كود داخلي: 02 - 22 - 03 - TO-AC-17

المتطلبات: إجراء الاختبارات اللازمة طبقا للمواصفات القياسية العالمية .

الهيئة :
- لوحة جهد منخفض (بيلار) سعة ٤٠٠ أمبير - ماركة: (S2 - 3B) - إنتاج شركة ثري برازرز للصناعات الهندسية والكهربائية.

اختبار عينة الاختبار : - تم اختبار عينة الاختبار تحت مسؤولية العميل.

المواصفات القياسية العالمية المستخدمة :
- IEC 61439-1: Low-voltage switchgear and controlgear assemblies- General rules.

الاختبارات :
١- الفحص الظاهري وقياس الأبعاد.
٢- اختبار الارتفاع في درجة الحرارة.
٣- التحقق من خصائص العزل بإجراء الاختبارين الاتيين:
١-٣ اختبار جهد الثبوت بالجهد المتردد بجهد قدره ١,٨٩ ك.ف - لمدة ٥ ثوان.
٢-٣ اختبار جهد الثبوت الجهد النبضي بالصواعق ٥٠/١,٢ ميكروثانية بجهد قدره ٤,٨ ك.ف.

معدات الاختبار :
١- محول التيار ٨٠٠ أمبير - ١٢٠ ك.ف.أ. - طراز: (VBTTEH) - رقم مسلسل: (757064).
٢- محول جهد ١١ ك.ف - طراز: (UZGT) - برقم (65/929130) - (65/925007).
٣- مولد نبضة الصواعق ٥٠/١,٢ ك.ف.أ. - طراز: (PSurge 30.2).



DIN EN ISO 9001:2008
Zurückbau 01 610 026214



قطاع معامل مركز أبحاث الجهد الفائق
الكيلو ٢٧ طريق القاهرة الإسكندرية الصحراوى
رقم التقرير : (٢٠١٧/ ١٠٥)
صفحة ٢ من ٣


الخلاصة :
- اجتازت لوحة جهد منخفض (بيلار) سعة ٤٠٠ أمبير - ماركة: (S2 - 3B) - إنتاج شركة ثري برازرز للصناعات الهندسية والكهربائية - الاختبارات المعتمدة لهذا التقرير وتحت الجهد المستخدمة التتبع من أجراء باقي الاختبارات المتخصص طبقا للمواصفات القياسية العالمية والتي لم يرد ذكرها بهذا التقرير.

ملاحظات :
- اختبارات الاختبار على الجهد الفائق لم يتم إجراؤها لعدم توفر المعدات المناسبة لذلك.
- اختبارات الاختبار على الجهد الفائق لم يتم إجراؤها لعدم توفر المعدات المناسبة لذلك.
- اختبارات الاختبار على الجهد الفائق لم يتم إجراؤها لعدم توفر المعدات المناسبة لذلك.
- اختبارات الاختبار على الجهد الفائق لم يتم إجراؤها لعدم توفر المعدات المناسبة لذلك.


مهندس الاختبارات :
[Signature]

مدير قسم الجودة
مركز أبحاث الجهد الفائق
[Signature]

رئيس قسم الاختبارات
[Signature]



DIN EN ISO 9001:2008
Zurückbau 01 610 026214



قطاع معامل مركز أبحاث الجهد الفائق
الكيلو ٢٧ طريق القاهرة الإسكندرية الصحراوى
رقم التقرير : (٢٠١٧/ ١٠٥)
صفحة ٣ من ٣

النتائج والنتائج :
١- الفحص الظاهري وقياس الأبعاد:
- التوافقية القياسية: (S2 - 3B) - إنتاج شركة ثري برازرز للصناعات الهندسية والكهربائية - الاختبارات المعتمدة لهذا التقرير وتحت الجهد المستخدمة التتبع من أجراء باقي الاختبارات المتخصص طبقا للمواصفات القياسية العالمية والتي لم يرد ذكرها بهذا التقرير.
- التوافقية القياسية: (S2 - 3B) - إنتاج شركة ثري برازرز للصناعات الهندسية والكهربائية - الاختبارات المعتمدة لهذا التقرير وتحت الجهد المستخدمة التتبع من أجراء باقي الاختبارات المتخصص طبقا للمواصفات القياسية العالمية والتي لم يرد ذكرها بهذا التقرير.
- التوافقية القياسية: (S2 - 3B) - إنتاج شركة ثري برازرز للصناعات الهندسية والكهربائية - الاختبارات المعتمدة لهذا التقرير وتحت الجهد المستخدمة التتبع من أجراء باقي الاختبارات المتخصص طبقا للمواصفات القياسية العالمية والتي لم يرد ذكرها بهذا التقرير.
- التوافقية القياسية: (S2 - 3B) - إنتاج شركة ثري برازرز للصناعات الهندسية والكهربائية - الاختبارات المعتمدة لهذا التقرير وتحت الجهد المستخدمة التتبع من أجراء باقي الاختبارات المتخصص طبقا للمواصفات القياسية العالمية والتي لم يرد ذكرها بهذا التقرير.

٢- اختبار الارتفاع في درجة الحرارة:
- التوافقية القياسية: (S2 - 3B) - إنتاج شركة ثري برازرز للصناعات الهندسية والكهربائية - الاختبارات المعتمدة لهذا التقرير وتحت الجهد المستخدمة التتبع من أجراء باقي الاختبارات المتخصص طبقا للمواصفات القياسية العالمية والتي لم يرد ذكرها بهذا التقرير.
- التوافقية القياسية: (S2 - 3B) - إنتاج شركة ثري برازرز للصناعات الهندسية والكهربائية - الاختبارات المعتمدة لهذا التقرير وتحت الجهد المستخدمة التتبع من أجراء باقي الاختبارات المتخصص طبقا للمواصفات القياسية العالمية والتي لم يرد ذكرها بهذا التقرير.
- التوافقية القياسية: (S2 - 3B) - إنتاج شركة ثري برازرز للصناعات الهندسية والكهربائية - الاختبارات المعتمدة لهذا التقرير وتحت الجهد المستخدمة التتبع من أجراء باقي الاختبارات المتخصص طبقا للمواصفات القياسية العالمية والتي لم يرد ذكرها بهذا التقرير.
- التوافقية القياسية: (S2 - 3B) - إنتاج شركة ثري برازرز للصناعات الهندسية والكهربائية - الاختبارات المعتمدة لهذا التقرير وتحت الجهد المستخدمة التتبع من أجراء باقي الاختبارات المتخصص طبقا للمواصفات القياسية العالمية والتي لم يرد ذكرها بهذا التقرير.

٣- التحقق من خصائص العزل بإجراء الاختبارين الاتيين:
- التوافقية القياسية: (S2 - 3B) - إنتاج شركة ثري برازرز للصناعات الهندسية والكهربائية - الاختبارات المعتمدة لهذا التقرير وتحت الجهد المستخدمة التتبع من أجراء باقي الاختبارات المتخصص طبقا للمواصفات القياسية العالمية والتي لم يرد ذكرها بهذا التقرير.
- التوافقية القياسية: (S2 - 3B) - إنتاج شركة ثري برازرز للصناعات الهندسية والكهربائية - الاختبارات المعتمدة لهذا التقرير وتحت الجهد المستخدمة التتبع من أجراء باقي الاختبارات المتخصص طبقا للمواصفات القياسية العالمية والتي لم يرد ذكرها بهذا التقرير.
- التوافقية القياسية: (S2 - 3B) - إنتاج شركة ثري برازرز للصناعات الهندسية والكهربائية - الاختبارات المعتمدة لهذا التقرير وتحت الجهد المستخدمة التتبع من أجراء باقي الاختبارات المتخصص طبقا للمواصفات القياسية العالمية والتي لم يرد ذكرها بهذا التقرير.
- التوافقية القياسية: (S2 - 3B) - إنتاج شركة ثري برازرز للصناعات الهندسية والكهربائية - الاختبارات المعتمدة لهذا التقرير وتحت الجهد المستخدمة التتبع من أجراء باقي الاختبارات المتخصص طبقا للمواصفات القياسية العالمية والتي لم يرد ذكرها بهذا التقرير.



قطاع معامل مركز أبحاث الجهد الفائق
الكيلو ٢٧ طريق القاهرة / الاسكندرية الصحراوى
رقم التقرير : (٢٠١٧ / ١٠٤)
صفحة ١ من ٣

رقم التقرير : (٢٠١٧/ ١٠٤)

■ العمير ————— ل: شركة ثري برازرز للصناعات الهندسية والكهربائية.

■ تاريخ التقرير : ٢٠١٧/٣/٢٩ .

■ مكان الاختبار:

- مركز أبحاث الجهد الفائق .
- كود داخلي: TO-AC-17-03-22-01

■ المتطلبات: إجراء الاختبارات اللازمة طبقاً للمواصفات القياسية العالمية .

العينة :

- لوحة جهد منخفض (كوفرية) سعة ٢٥٠ أمبير - طراز: (3B - S3) - إنتاج شركة ثري برازرز للصناعات الهندسية والكهربية.

■ اختيار عينة الاختبار: - تم اختيار عينة الاختبار تحت مسؤولية العميل.

■ المواصفات القياسية العالمية المستخدمة :

- IEC 61439-1: Low-voltage switchgear and controlgear assemblies- General rules.

■ الاختبارات :

- ١- الفحص الظاهري وقياس الابعاد.
- ٢- اختبار الارتفاع في درجة الحرارة.
- ٣- التحقق من خصائص الخل بجاء الاختبارين الاتيين:

■ معدات الاختبار :

- ١- محول التليار ٤٨٠٠ أمبير - ١٢٠ ك.ف.أ. - طراز: (VBTEH) - رقم مسلسل: (757064).
- ٢- محول جهد ١١ ك.ف. - طراز: (UZGT) - برقم (65/929130) - (65/925007).
- ٣- مولد نبضة الصواعة ٢ ك.ف. - ٥ ك.جول - طراز: (PSurge 30.2).



• طريقة التتبع والاستقصاء :

• طريقة التلخيص المختصرات:

[illegible]

اختبار الارتقاع في درجة الحرارة:

تم إجراء الاختبار طبقاً لتقنية (ISO 10 - 10) من المعايير القياسية المعمول بها IEC (57439-1) بإمبارت تيار قيمته (350 أمبير) حتى حدوث التران حراري بحيث لا يزيد أعلى فرق لدرجة الحرارة عن (200°) لظروف التوصيل (التلامس) .

اجتازت التوجة الاختبار - حيث حققت أقصى ارتفاع على درجة الحرارة (90°) عند درجة حرارة الوسط (21°) .

التحقق من خصائص العزل بإجراء الاختبارين الآتيين :

١٠٣ اختبار جهد الشد المتعدد ٥٠ ذات طبعا للتبدد رقم (10.9.2) من المواصفة القياسية العالمية IEC 61439-1 وذلك بتطبيق جهد قدرة 1,٨٩ ك.ف.م لمدة ٥ ثوان.

• اجتمعت للوعاء الاخشاب •

٢.٣ اختبار جهد الشد بالجهد الدفعي بنقطة الصواعق ٢، ١/٥ ميكروثانية - بعدد ٥ نبضة موجبة ومنها سلبية - بجهد قيمته ٤.٨ كيلو فولت للشد رقم (10.9.3) من المواصفة القياسية العالمية

IEC-61439-1

اجازت التوجه الإقليمي



• الخلاصة :

اجتازت لوحة جهد منخفض (كوفرية) سعة ٢٥٠ أمبير - ماركة: (S2 - 3B) - التاج شركة ثري براذرز للصناعات الهندسية والكهربائية - الاختبارات المذكورة بهذا التقرير وعلى الجهة المتستخدمة التلصق من اجراء باقي الاختبارات المنصوص عليها بالمواصفات القياسية العالمية والتي لم يرد نكرها بهذا التقرير.

• ملحوظة :

ملحوظة:
تم إجراء الاختبارات على هيئة التي تم إرسالها للفهم العامة حول أي متوافقة بخصوص الحالات التي يتم
إجراء الاختبارات بناءً على طلب الجهة طالبة الاختبار حول أدنى متوافقة على شرطه التقنيّة لتوفيرها مصدر إقرار
إحداثيات القابل
الامتثال لاختبار الامتثال لمتطلبات من هذا المرفق لا يوافقها كتيبة من مراكز إحصاءات الفهم
ويشدد إصدارها على كتيبة من مرفقها
الحزب أي متوافق على عقبات الاختبار بعد استلام تقرير الاختبار الخاص بقلبيّة المرفوعة والتي تم إجراء
الاختبار بالتيبة وذلك في فترة لا تتجاوز أسبوعين من تاريخ إحصاء التقرير.

مهندسو الاختبارات :

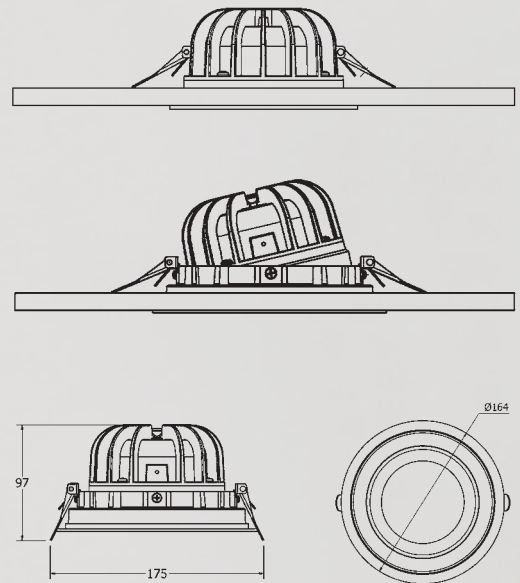
مدير عام الجودة
مركز أبحاث الجهد الفائق
بدرية محمد
د/ محمد عبد العزيز عبد



— 49 —

Product Design

Since the beginning, 3Brothers has developed a wide range of product lines with its remarkable and unique designs, perfected by our professional designers with the highest quality that is distinguished, with creativity to enrich the work they undertake for our clients. Our goal is to always look for new visionary designers to push our philosophy to product and system design to help us continue to leverage the power of our unique design.





OUR
PRODUCTS

LIGHTING SOLUTIONS

3Brothers products:

Indoor range: LED and conventional Down Lights, Task lighting, LED panels, Fluorescent fixtures, and Industrial Lighting and Emergency lights.

Outdoor range: Steplights, Uplights, Floodlights, Spikes, Wall washers, Wall mounted luminaires, Bollards, Poles, Urban luminaires and Street lighting.

We are enthusiastic in dealing with the best OEM, providing us with the highest quality aiming to achieve the customers' satisfaction.

Downlights



Task lighting(Track/ Surface Mounted)



Wall Mounted Luminaires



Exit Signs



Panel Lighting



Industrial Lighting



Step Lights



-71520PL -71522PL -71516PL -71530PL -71535PL -71540PL -71600PL-

Ground Recessed Luminaires



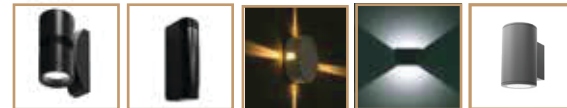
-71110PL -71120PL -71080PL -71083PL -71090PL -71050PL -71085PL -71095PL

Flood Lights



-75025PL -75027PL -72550PL -72600PL -72530PL -72520PL

Wall Mounted



-73590PL -73530PL -73520PL -73580PL -73600PL

Bollards



-74580PL -74520PL -74510PL -74515PL -74530PL -74540PL -74550PL -74500PL



-74570PL -74590PL -74595PL

Lighting Poles



-75500PL -75510PL -75512PL

Urban Lighting



-75505PL -75502PL -75530PL -75550PL -75580PL -74102PL -75605PL -75550PL



-75620PL -75630PL -75685PL -75660PL

Street Lighting



-74170PL -74100PL
-43-T2

POWER SOLUTIONS

Lighting Automation System

Electrical Panels

LIGHTING AUTOMATION SYSTEMS

KNX

-We have been certified by ABB for electrical industries as a qualified system integrator for KNX, BMS, and Central Battery Systems.

KNX is a Protocol by which all devices can communicate through, it can be controlled by (Smart Phones, Tablets, and Smart Screens)

KNX can transform the house or the apartment into an intelligent home, it doesn't only control lighting systems but also the heating systems, air conditioners and ventilation systems, to a coherent and efficient climate control measured temperature values in the room.

KNX system benefits:

- This system guarantees energy saving.
- It also increases the level of comfort and convenience.



BUILDING MANAGEMENT SYSTEM (BMS)

BMS is an intelligent microprocessor-based controller network, installed to monitor and control buildings technical systems.

Traditional BMS consists of servers, supervisory devices, field buses, controllers, inputs, and outputs. They are also known as Building Automation Systems (BAS).

A BMS connects the HVAC and different building equipment to work as one integrated unit. Ideally, they should centralize operations and make data easier to visualize using a user interface or console.

List of Equipment controlled by BMS in buildings:

HVAC (Heating, Ventilation, and Air-conditioning or all supply and exhaust fans, ACs etc.).

Lighting control system.

Fire alarm system.

Firefighting system.

Security control system.

CCTV system.

Lift control system.

Pumping system.

Water tanks level.

Irrigation system.

Electrical meters.

Water Leak detection system.

VFD-Variable frequency drives.

VRV/VRV-Variable refrigerant flow or volume.



CENTRAL BATTERY SYSTEM (CBS)

This system is used to power emergency lights and exit signs in administrative and educational buildings, hospitals, and high-rise buildings. It is powered by a standard power source. When main supply fails the central batteries are automatically converted from main supply to central battery power.

Emergency lighting standards:

1. The Emergency Lighting System and all of its components should be manufactured to meet the requirements of BS EN 50171, ICEL1009, CE and the local regulation.
2. The system shall be CE & ICEL marked. Type tested by Third Party Kite Mark on BSEN50171.
3. Emergency and EXIT luminaires must be Type Tested to EN60598.2.22
4. All electrical installations shall be carried out in accordance with current International Standards and Codes of Practice specifically with the current issue of the IEE Regulations (BS 7671) and the requirements of the local supply authority.
5. The entire installation shall be installed and tested in accordance with the relevant International Standards and any requirements of the local regulation and/or the local municipality authority.



CASAMBI

iComfort:

Human centric lighting offers the concept of biological effective lighting because it includes the visual, emotional effects of light and it can support people's long-term health, improve their motivation and productivity.

iComfort Control:

CASAMBI solution is a modern wireless lighting control based on Bluetooth Low Energy. The main aspects of the Casambi solutions are friendly user experience, easy scenario customization and mobile friendly control.



ELECTRICAL PANELS

- TYPE TESTED

• Acti9 Panels:

Acti9 panels represents Schneider Electric's fully type-tested panel board for low voltage distribution in residential, commercial and industrial applications complies with IEC 61439-3 standard

Acti9 panel Indoor Flush mounted panel boards up to 25 kA/1s and Outgoing number of ways from 18 line up to 54-line modules and Distribution solutions up to 250A and IP40



•Prisma iPM:

3brothers is an established name in the Low Voltage Panel building market, holding a strong position as a certified Type- Tested Panel Assembler since 2015 depending on along partnership with Schneider Electric.

Prisma iPM, represents Schneider Electric's fully type-tested panel board for low voltage distribution and Motor Control Centers (MCC's) in residential, commercial and industrial applications complies with IEC 61439-1,2 standard with indoor operation and certified by (CCC and ASEFA) laboratories.

Safe and reliable switchboards that guarantee the comfort for our customers.

- **Prisma iPM (System L):** Indoor Wall mounted panel boards up to 25 kA/1s and up to 32 vertical modules and Distribution solutions up to 630 and IP 30/31/40/54.

- **Prisma iPM (System M):** Floor standing switchgears up to 85 kA/1s and 36 vertical modules and Distribution solutions up to 4000 A and IP 30/31/42/54 and available segregation up to Form 4b.



- PARTIAL TYPE TESTED

• Spacial:

Initially known as Himel, it is an additional product that Gila included in its portfolio to fulfill market needs for non-type tested panel boards.

Routinely tested panels – according to IEC- 60529.



- NON TYPE TESTED

Due to special market needs, Gila develops and manufactures low voltage panels including wall mounted and floor-standing enclosures up to 5000A depending on the well-known expertise of Gila in panel assembly.

Also, Gila offers local feeder pillars and distribution boxes that service distribution networks.



- BUSWAY

-Busway is fully type tested and comply with IEC61439-6 for each and every ampere rating of busway

-Available 4-wire with integral earthing and 5-wire with internal earthing

Conductors: Copper (630A~6300A)

Copper contact (800A~6300A)

IP(40/41/54/65/66)

Voltage: Up to 1000V

Operating frequency: 50/60 Hz



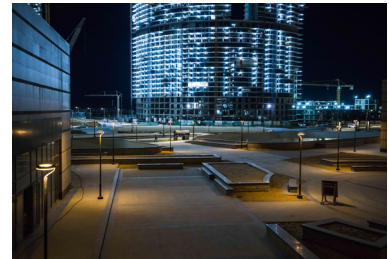
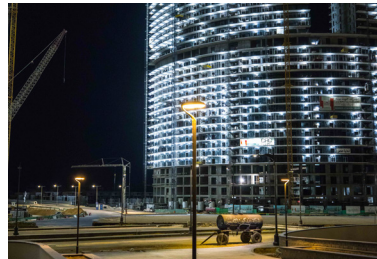
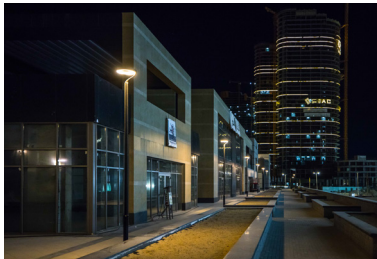


OUR
PROJECTS

OUR PROJECTS

NEW EL ALAMEIN CITY

New El Alamein City is considered the First model of the new generation of the millennium cities, The city is located on an area of 50,000 feddans, it is designed to accommodate more than 3,000,000 inhabitants by the end of the First phase and ready to be not only a summer resort only but as a housing units all over the year as well. It will be iconic city for the Western North Coast after its implementation.

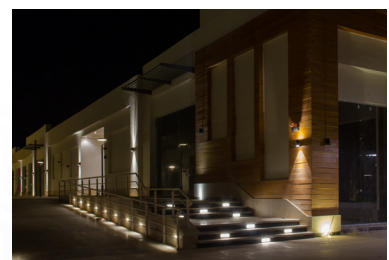
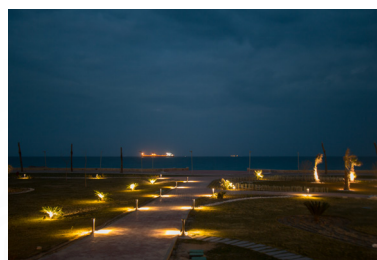


AIN SHAMS UNIVERSITY



GALALAH

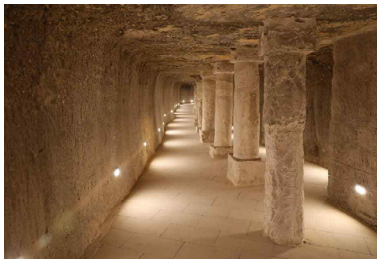
Galalah project is considered to be one of the largest national projects on sokhna coast.



AMWAJ NORTH COAST



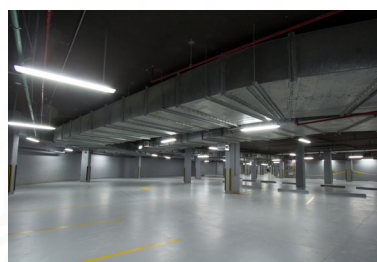
DJOSER - THE FIRST PYRAMID IN THE WORLD



THE SQUARE



EL REHAB MALL



EGYPTIAN EMBASSY IN ZAMBIA

Unique design of an important building with Egyptian spirit using indoor down light with different dimensions to give comfortable lighting distribution in each part of the building besides fluorescent light for the offices.

Using different lantern posts and wall fence with High weather protection to suit the weather in Zambia, Which formed an elegant view for the outdoor sight.

Country: Zambia

Year: 2015



TOLIP HOTEL

The Project comprises a new and distinguished collection of LED lights. A collection of outdoor LED lights were fixed, including poles and wall lights which highlight the beauty and elegance of the place in harmony with the spirit and sense



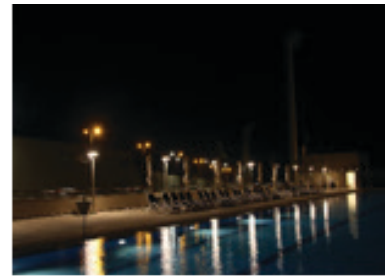
PLATINUM CLUB

Al Ahly for Real Estate Development

The Project comprises a new and distinguished collection of LED lights. A collection of outdoor LED lights were fixed, including poles and wall lights which highlight the beauty and elegance of the place in harmony with the spirit and sense of the place.

Fifth Settlement

2014-2015

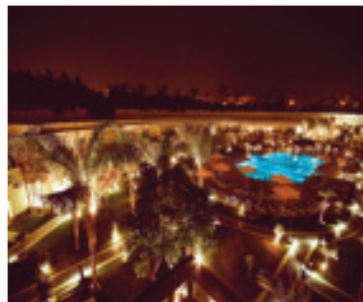


RENAISSANCE HOTEL

The Project comprises various collections of different bollard and pole lighting systems that suit the outdoor landscape

Renaissance Hotel

2013



SMART VILLAGE

It is an important Project executed by the Company as regards fixing outdoor lights in the Smart Village Project, including various collections of garden and outdoor lights such as bollards and flood light trusses and poles that suit the outdoor landscape of the Project.

Cairo-Alexandria Desert Road, Abu Rawash, Giza

2005 up until date



SUDAN PROJECT

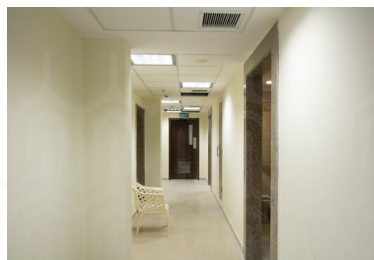
The Project comprises a new and distinguished collection of LED lights. A collection of outdoor LED lights were fixed, including poles and wall lights which highlight the beauty and elegance of the place in harmony with the spirit and sense of the place.

Khartoum

2015



MADINTY SPORT CLUB



OUR PROJECTS

LOCAL PROJECTS

United group of Hassan allam and Orascom
North of cairo for electricity distribution
El Meem engineering and contracting
El Meem engineering and contracting
Hassan Allam -technologies
Arab contractors - Alexandria branch
Amer group
Engineering company for construction and
re-construction, Dora
United group for trading and contracting
Alexandria for construction
El Meem engineering and contracting
Arab contractors - Electrical administration
Giza Power
Expert for contracting and trading
Concrete
Total air
Infinity Group
hassan Allam -technologies
Al Ahly for construction investment
Mafco Misr For engineering and contracting
Zaky group - El sewedy
Engineering company for construction and
re-construction, Dora
Giza Power
Engineering for contracting and supplies
Arab contractors - Electrical administration
Giza Power
El Safa for contracting and trading
Hassan Allam construction
Treasure group
El Serafy Engineering LLC
Talaat mostafa group - MCBS
Orascom for Hotels and development
Emaar
Sanitaire
British university in Egypt

New Giza
Cairo for construction
Kayan construction
Talaat mostafa group - MCBS
Talaat mostafa group - MCBS
BUE
Orascom construction
Atlas general for Contracting
El Meem engineering and contracting
Archirodon construction
Advanced vision egypt
Arab contractors
Amer group
Tele Tech
Ghrably for enigeering
Orascom construction
petroject
Beta pharma for medical manufacturing
Total air
Ghrably for enigeering
Alexandria for construction
Soadaa construction
Egyptian co. for management, services and
maintenance (EMSM)
Tower for construction
Arab contractors - north of Delta
Swaaad construction
Shams construction
Al dar engineering contracting
Sodic
petroject
Sodic
Hassan Allam
Arab contractors
Tada for export and import
Alexandria for tawkilat
petroject

Orascom
Nasr city for housing and costruction
Giza Power
Arab contractors
TechTown Construction
Hassan Allam -technologies
Tower for Instructions and Architecture
Areas office for Constructions
Arab Contractors and Construction Management
Bridges Specialized
Sawaed for Constructions
Treasure Group
El Shams For Contracting & Engineering Works
Sodic
Orascom Instructions
Arabic First for hotels and touristic areas
Al Basha For refrigeration and air conditioning
Sayed Mostafa Abdeen For General Contracting &
Integrated Works
Alexandria for procurations
Al Faneya for Constructions and Engineering
Degla Real Estate Investment
Degla Real Estate Investment
Alexandria for procurations
Sodic
Alexandria for procurations
International for Engineering Supplies and
contracting- IESC
Samecrete
Treasure Group
BUE
Petrojet
Arab Contractors
Sodic
Arab Contractors
Sodic
Tolba for Engineering and Contracting

Tolba for Engineering and Contracting
BUE
Al-Shefaar for Constructions Investment
Arab Contractors
Petrojet
Petrojet
Thalaga Al Abour
International for Engineering Supplies and
contracting- IESC
Benaa' Mahdouda for Constructions

Garden List:-

Family Park- El Rehab

El Slam Park- Sharm El Sheikh

Airport Park

El Azhar Park

Suzan Mubark Park

GOVERNMENT PROJECTS

Information Center of finance ministry

Communication Presidency – Sharm El Sheikh

Criminal Evidence Office

Central Auditing of Statistics

Technological Educational academy

Third line of Subway

Technological academy -El Amirya

Underground management

Governor's office- Red Sea

Bahrain embassy

Military factory for iron – AlDekhela

Military factory for steel company

Khanka factory

Hurghada Airport

Cairo International Airport

Borg El Arab airport

Port Said Airport

MarsaMatrouh Airport

Ain Shams Medical College

Heart Institute –Assiut

Building of exports and imports- The Airport

Airport building

The Ministry of Higher Education

Islamic Art museum

cairogovernor office

Akhenaten Museum

Ministry of Water Resources

Mohamed Ali Museum -Manial

Ministry of Health

Second Army field

Republican Guard

Central Auditing Organization

U.S Embassy

National Museum of Civilization

Egyptian Museum

Air Traffic Controllers At Cairo Airport

October Panorama

Cairo University

Iraq embessy

Oman Embassy

Finland embassy

Assiut Airport

Imbaba Airport

AssuitAirpor

Quesna Airport

Faculty of Dentistry -Suez Canal

Faculty of Commerce Kafr El-Sheikh

Attorney General building

Terminal 3 at Cairo airport

Communication Headquarters Building

Republican Guard building

Island and civilization museum

Peace Museum in Sharm El-Sheikh

Suzanne Mubarak Museum

Revolution Command Museum

the Ministry of Investment

The Ministry of Scientific Research

Ministry of Trade and Industry

Ministry of Civil Aviation
The Ministry of Culture
National Eye Hospital
Kasr El Ainy Hospital
Abu Rish Hospital
Luxor Hospital
Medical Center of Arab Contractors
Medical Center – Madenty
Medical Center -Wadi El Nile
Medical Center of the petroleum sector
Hospital doctor – Tagmoaa
Salam International Hospital
Nasser General Hospital
Heart Institute – Assiut University
6th of October hospital

Ministry of Education
Hospitals
A V G Pharma
International Medical Center
Medical Center, 6 October
Medical Center of the petroleum sector
Ganzouri Hospital
Nasser Institute
Eye Hospital
Ministry of Health Hospitals
Police Hospital
Dar Al Salam Hospital
health Insurance Hospital -Shubra
Aviation Hospital

HOTELS & RESORT LIST

Four Seasons Hotel – Sharm El Sheikh
Porto North Coast
Intercontinental City Stars
Porto Sokhna
First Mall
Grand Hyatt Regency
Grand Makadi
Renaissance View Beach
Stella Di Mare
Stegnberg Golf El Gouna
veranda – Sahl Hashish
Hotels Habiba Marsa Alam
Shteigenberger Hotel Luxor
Sonesta Hotel
Sheraton Branches

Continental Hotel
Concorde El Salam Hotel
Marriott Hotel- Zamalek
Movenpick Hotel –Branches
Mena House Oberoi Hotel
Novotel Airport Hotel
Hilton Branches
Stella Di Mare village
Naama Bay Village
Coral Beach Resort in Hurghada
White night- Sharm el-Sheikh
Hilton -Hurghada
Hilton Branches

CLUBS LIST

Covered Hall Zamalek Club
Health Club-Movnbek Pyramids
Madinaty- Sport Club B1

El Ahly Club
Rowing Club
Madinaty- Golf Club

UNIVERSITIES & SCHOOLS

Draya University
Al Karnak schools
Nefertari Schools
St. George's Schools
Ramses College Schools

British University
Al Ahram University
6th of October University
Ain Shams University

PANELS PROJECTS

Porto Sokhna Project
El Forsan Hotel
Qaha Hospital
Expatriate Building Project St. Mary Church
Al Khanka Hospital
Hadaba Al Ahram Project
Egyptian Engineers Syndicate
Beta Farm Project
Maryland Project
Al Mahalla Railway Station
Medicine of Benin Al- Azhar university
Dr.Sabri hospital
Bavaria Factory
Bank al Baraka Zayed Branch
Al Mansoura #5
Al Mansoura #4
Villa AMER
Fuwah Railway Station
Project of the Academic Heart
Mahalla Moussa Railway Station
Al Mansoura #3
Business Park Al Rehab
Hyde Park Project
Al Mansoura #6
Man groovy project –The new Marina
Kattamya Facility
El Arish Hospital
Berenice Military Airport Project
Sharq El Owainat Airport
Damietta Clinics Project
Project 6000 – Al Masa Hotel New Alamin
Casa Cook Hotel- Hurghada
Agora Mall
Giza Chest Hospital
Banque Misr Gamsa Branch
USAID Site
Marble Factory –El Galala
Al – Ahly Club
Aga Khan Garden
Health Unit – Rayah Village – Ismailia
Concrete Products factory El Galala
15 Family health units – Aswan
Costa Mars Hotel
Information Infrastructure for west Port said port

Cruising Ship (SAVOY)
Development of the branches of the Egyptian
Telecom Company (We)
Qatar National Bank
Banque Miser Al Ahly Club- Sheikh Zayed
Al Buoroj Project
Cairo Festival City
Al-Bayadeyah Hospital
Qanatar Central Hospital
Edfu General Hospital
Faisal Islamic Bank – Beni Suef Branch
Tukh Fever Hospital
Dekhela M.T.S
Suez medical Complex
Residential District – New Administrative Capital
R05
Arab Investment Bank –New Administrative Capital
Residential neighborhood Project –The new
Administrative Capital RO5
Al sadr Hospital in Aswan
Qena Fever Hospital
Al –Mahala Fever Hospital
Al – Adwoa Al-Markzi Hospital
Al-Sadr Hospital in Al Ayat
Shenta El-Hagar Hospital Project
Al-Hussein University Hospital Project
Spherical Gunpowder Factory Project
Health Unit – Urban medical center Darawa
Health Unit Aaqab Al – Desah
Ashmoun Fever Hospital Project
Prima Foodstuff factory Project
Hangar Project
Madrasetna Project
Villa in the military entity Project
Mamsha Ahl Misr Project
Wadi Degla Club Project
Al Sadr Hospital in Qena
Fanadir Project (Red Sea Governorate)
Infrastructure Project
Badr City Prisons Complex
South Valley National University Project
Health units projects (Sohag Governorate)
The entertainment building for the Egyptian
Telecom Club

Porto Sokhna Project
El Forsan Hotel
Qaha Hospital
Expatriate Building Project St. Mary Church
Al Khanka Hospital
Hadaba Al Ahram Project
Egyptian Engineers Syndicate
Beta Farm Project
Maryland Project
Al Mahalla Railway Station
Medicine of Benin Al- Azhar university
Dr.Sabri hospital
Bavaria Factory
Bank al Baraka Zayed Branch
Al Mansoura #5
Al Mansoura #4
Villa AMER
Fuwah Railway Station
Project of the Academic Heart
Mahalla Moussa Railway Station
Al Mansoura #3
Business Park Al Rehab
Hyde Park Project
Al Mansoura #6
Man groovy project –The new Marina
Kattamya Facility
El Arish Hospital
Berenice Military Airport Project
Sharq El Owainat Airport
Damietta Clinics Project
Project 6000 – Al Masa Hotel New Alamin
Casa Cook Hotel- Hurghada
Agora Mall
Giza Chest Hospital
Banque Misr Gamsa Branch
USAID Site
Marble Factory –El Galala
Al – Ahly Club
Aga Khan Garden
Health Unit – Rayah Village – Ismailia
Concrete Products factory El Galala
15 Family health units – Aswan
Costa Mars Hotel
Information Infrastructure for west Port said port

Cruising Ship (SAVOY)
Development of the branches of the Egyptian
Telecom Company (We)
Qatar National Bank
Banque Miser Al Ahly Club- Sheikh Zayed
Al Buoroj Project
Cairo Festival City
Al-Bayadeyah Hospital
Qanatar Central Hospital
Edfu General Hospital
Faisal Islamic Bank – Beni Suef Branch
Tukh Fever Hospital
Dekhela M.T.S
Suez medical Complex
Residential District – New Administrative Capital
R05
Arab Investment Bank –New Administrative Capital
Residential neighborhood Project –The new
Administrative Capital RO5
Al sadr Hospital in Aswan
Qena Fever Hospital
Al –Mahala Fever Hospital
Al – Adwoa Al-Markzi Hospital
Al-Sadr Hospital in Al Ayat
Shenta El-Hagar Hospital Project
Al-Hussein University Hospital Project
Spherical Gunpowder Factory Project
Health Unit – Urban medical center Darawa
Health Unit Aaqab Al – Desah
Ashmoun Fever Hospital Project
Prima Foodstuff factory Project
Hangar Project
Madrasetna Project
Villa in the military entity Project
Mamsha Ahl Misr Project
Wadi Degla Club Project
Al Sadr Hospital in Qena
Fanadir Project (Red Sea Governorate)
Infrastructure Project
Badr City Prisons Complex
South Valley National University Project
Health units projects (Sohag Governorate)
The entertainment building for the Egyptian
Telecom Club

INTERNATIONAL PROJECTS

PROJECT IN AFRICA:

zambia	Somalia
Mali	Ghana
Libya	Kenya
Sudan	Chad

GERMANY

Dana health care buildings

YEMEN

Central bank

Medicine college

Ice factory

IRAQ

Ammanet Bagdad

Military canal development

QATAR

Ministry of interior drugs department

Desman building in omgualina

Old salta tower

Ministry of interior criminal research

police new building

Al wafaq al jasra and on dal baraha project

SUDAN

Republican palace

Soba hospital

Car park

Igentech club

Khartoum park

Street light at alzhor district

Al marwa park

Street light at elamarat district.

Sanhory mosque

UNITED ARAB OF EMIRATES

Retail

Tunisian embassy

SYRIA

Alnor hospital

Al Ragaa hospital

Surgical hospital

Sara for women wear

Omer Abdaziz school

Alfaro for clothing company

Alaghoani factory

JORDON

Al kark hospital-

USAID hospitals

Al Zaha center

Implemented projects

Entelak Ema'aan

Hussein Cancer

Expansion of the commission

Al moasah hospital

Islamic bank branches

health ministry building- retail

Islamic Hospital

Tofila Hospital

Hospital Mosque

KSA

Americana

The Royal Commission

KUWAIT

Jaber Al Ahmed City

Al Juliaha Camp

Al Wafraah City

Ministry Council

WHERE WE ARE

FACTORIES

The Innovation Center

Industrial Area (A1) 10th of Ramadan , Egypt P.O Box 233 (0554) 410242/43 - (0554) 410241

Factory

Industrial Area (A4) 10th of Ramadan, Egypt Block 129,130,131
(0554) 332172/3/4 - (0554) 332171/75

BRANCHES

- Germany Office:

Friedrichstraße 10, 70174 Stuttgart. +49 30 208 88- 1073

- Cairo Head Office:

21 El Mahed El Eshtraki St., Roxy Cairo, Egypt. (02) 22571798 - 24527944 (02) 22587966

- Sales & Tech Office:

37 Ibrahim St., Roxy, Cairo. (02) 22571798 - 24527944 (02) 22587966

- Maadi Showroom:

Shop No(7-B) Building No: 7/2 Elnasr St, Elshatr Eltasee - El Maadi El Gedida, Cairo. (02) 25176402 25176403

- Alexandria Office & Showroom:

16 El Akbal St, Loran (03) 3584802 - 3584810 - 3584808 (03) 3584804

- 10Th Of Ramadan Showroom:

El Masria Center (2) (0554) 381608 (0554) 381608

AGENTS

KUWAIT

Tel : 99861486

Tel : 23919220, 23916767, 23914328

Email : info@el-eman.com

Address : Fahaeel Area, Block 7, Eldabous ST, Elmezyed complex, floor 3

Zambia

Address : Plot No. 34 Siisii Road, Lubuto Area in Ndola on the Copperbelt province

DRC

Address: manika jolie site, kolwezi



- **Germany Office:** Friedrichstraße 10, 70174 Stuttgart. ☎ +49 30 208 88- 1073
- **Cairo Head Office:** 21 El Mahed El Eshtraki St., Roxy Cairo, Egypt. ☎ (02) 22571798 - 24527944 📠 (02) 22587966
- **Sales & Tech Office:** 37 Ibrahim St., Roxy, Cairo. ☎ (02) 22571798 - 24527944 📠 (02) 22587966
- **Maadi Showroom:** Shop No(7-B) Building No: 7/2 Elnasr St, Elshatr Eltasee - El Maadi El Gedida, Cairo. 📠 (02) 25176402 ☎ 📠 25176403
- **Alexandria Office & Showroom:** 16 El Akbal St, Loran ☎ (03) 3584802 - 3584810 - 3584808 📠 (03) 3584804
- **10th Of Ramadan Showroom:** El Masria Center (2) ☎ (0554) 381608 📠 (0554) 381608
- **Innovation Center:** Industrial Area (A1) 10th of Ramadan , Egypt P.O Box 233 ☎ (0554) 410242-43 📠 (0554) 410241
- **Factory:** Industrial Area (A4) 10th of Ramadan, Egypt Block 129,130,131 ☎ (0554) 332172-3-4 📠 (0554) 332171-75

✉ info@3-brothers.com

🌐 /3BrothersForLighting

WWW.3-BROTHERS.COM